

SDGs and black sea bream burger

At Bentenjima Kaihin Kouen, it was known as a clam digging spot, but recently, clam digging has been suspended due to crop damage caused by black sea bream.

A tourist symbol tower of Bentenjima was built, will also be the 50th anniversary. As a measure against damage by black sea bream in collaboration with the supervision of 'Resort café LEADER Bentenjima branch,' students from the Hamamatsu Confectionery Culinary School challenged to make a Black Sea Bream Burger and the trial sales were conducted during the beach opening of Bentenjima.

The fishermen express concerns about damage caused by black sea bream and mention that, as a countermeasure, they are deploying nets. However, they note that the cost is becoming a significant burden.

The Black Sea Bream Burger has achieved success through trial and error, and there are plans to expand its offerings as a local brand in the future.



SEA and LAKE

Double fun at once!

Let's enjoy activities at Lake Omotehama!



Lake Omote-Hamana spans Maisaka-cho Chuo-ku Hamamatsu City and Arai-cho in Kosai City and It is a region known for active fishing in the Enshunada and Lake Hamana.

A diverse range of fish species, including whitebait, pufferfish, and bonito, are caught, especially, whitebait boasts one of the highest catches in Japan.

Aquaculture thrives, with seaweed, oysters, eel, and softshell turtle being popular local specialties.

Sightseeing activities are abundant, and you can enjoy kayaking, fishing, cycling, and more.

There are also plenty of local restaurants and accommodations, where you can enjoy local ingredients and specialty products.

Access to Bentenjima Kaihin Kouen

Tokyo Station	Tokaido Shinkansen Approximately 1 hour and 30 minutes.	Hamamatsu Station	JR Tokaido Main Line Approximately 12 minutes.	JR Bentenjima Station	Approximately 3 minutes on foot.	Bentenjima Kaihin Kouen
Shin-Osaka Station	Tokaido Shinkansen Approximately 1 hour and 30 minutes.	Toyohashi Station	JR Tokaido Main Line Approximately 22 minutes.	JR Bentenjima Station	Approximately 3 minutes on foot.	Bentenjima Kaihin Kouen
Nagoya station	Tokaido Shinkansen Approximately 30 minutes.					
	Tokaido Shinkansen Approximately 25 minutes.	Kanzanji IC	Hamamatsu Nishi IC	JR Tokaido Main Line Approximately 22 minutes.	Approximately 3 minutes on foot.	Bentenjima Kaihin Kouen
	JR Meitetsu Local Lines Approximately 55 minutes.					
Tokyo	241km Approximately 3 hour and 10 minutes.		12km	Approximately 21 minutes.		
Osaka	275km Approximately 3 hour and 30 minutes.		15km	Approximately 21 minutes.		
Nagoya	82km Approximately 1 hour and 5 minutes.					

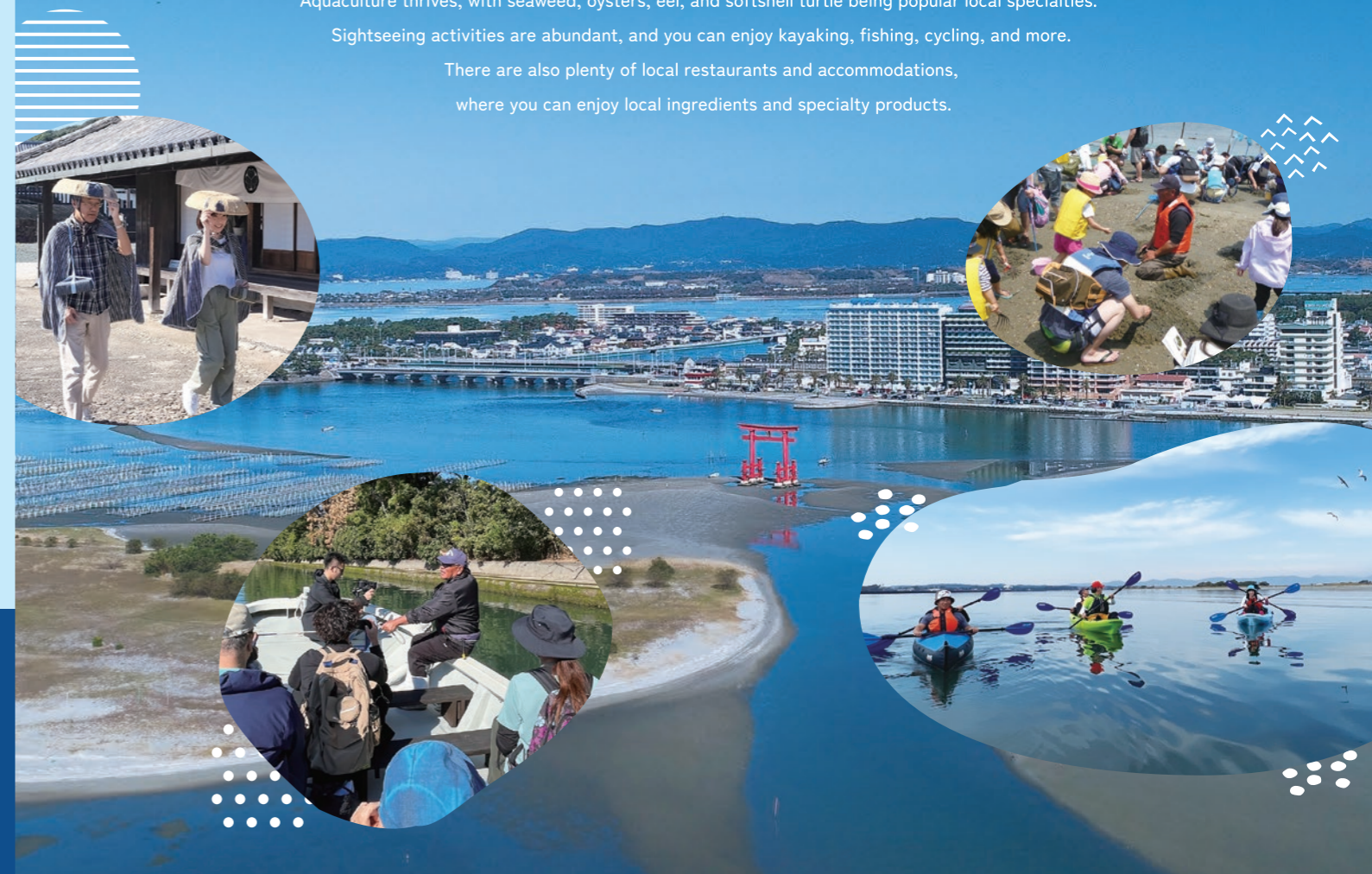
※The required time is an estimate.

Maisaka town
Tourist Association,

〒431-0214
3775-2 Maisaka-cho Bentenjima Chuo-ku hamamatsu-shi, Shizuoka-ken
TEL:053-592-0757

Tour Plan Implementation

Tokai Travel Co., Ltd.
Registered Travel Agency by Commissioner of the Japan Tourism Agency,
Registration No. 1015
Zip code 432-8036 2-9-16 Higashiiba Chuo-ku Hamamatsu-shi Shizuoka-ken
TEL:053-456-3550 MAIL:tourinfo@tokaitravel.co.jp



Learn about the fishing grounds, environment, and Tokaido's road culture of Lake Hamana, complemented by activities and experiences in the abundant natural landscapes.



Kayaking experience tour with professional guides who have explored both domestically and internationally.

The 'Natural Tidal Flats - Ikari-ze,' located just in front of Bentenjima Kaihin Kouen, is a genuine natural field that remains in Lake Hamana and the surroundings boast crystal-clear and beautiful lake water. Float comfortably on the water's surface and enjoy a delightful time.

- Time required.** 2 hours and 30 minutes (9:30 AM to 12:00 PM) + mealtime.
- Entry conditions** Healthy person between the ages of 5 and 69
- Price** Common for adults and children : ¥10,300
- Minimum number of participants** 5 persons (up to 10 persons)



Cycling tour to enjoy Lake Omote-Hamana with a tour guide.

Embark on a leisurely 23km cycling journey, exploring the picturesque landscapes of Lake Hamana and watching views of fishery and farming activities. This route takes you through historic post towns and fishing villages of Tokaido, dating back to the Edo period.

- Time required.** 3 hours and 30 minutes (9:00 AM to 12:30 PM) + mealtime
- Entry conditions** Age 11 & over, People over 145 cm and able to ride a bicycle.
- Price** ¥9,000 (Bicycle rental fee included)
- Minimum number of participants** 3 persons (up to 10 persons)



Experience the Old Tokaido Ferry and Explore the History of Arai-shuku and Maisaka-shuku Tour.

During the Edo period, the important checkpoints for the Tokaido, such as Arai-shuku and its neighboring town of Maisaka-shuku, were accessed by crossing the Imagire ferry. After actually crossing from Maisaka-shuku to Arai-shuku by ferry, we will explore the old townscapes and historical spots of Arai-shuku and Maisaka-shuku on foot with guidance from our guide.

- Time required.** 6 hours and 30 minutes (9:00 AM to 15:30 PM)
- Entry conditions** Age 6 & over
- Price** ¥9,500
- Minimum number of participants** 5 persons (up to 10 persons)



! Notes

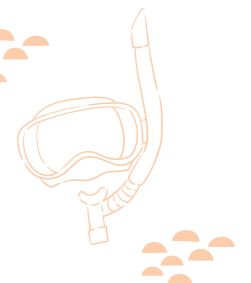
- All tours depart from and return to Bentenjima Kaihin Kouen. (3 minutes walk from JR Bentenjima Station)
- We will proceed with the tour even in rainy weather, but If we deem the tour unsafe due to factors like lightning, we will cancel the tour.
- Included in the price is Insurance fees, experience fees, facility usage fees, lunch expenses, guide fees, consumption tax.
- If interpretation services are required, additional interpretation fees will be necessary.
- Please check the website for detailed information about the tour.
- Lunch menu may change depending on the season.

Adventure experience on the Tidal Flats of Bentenjima.



Snorkeling

Lake Hamana is a brackish lake where seawater and freshwater mix. However, here at Bentenjima, being closer to the Enshunada, the salinity is higher, and the water clarity is relatively good. Additionally, please be cautious about the location and timing, as the tide can flow rapidly depending on the time of day. Since it is a brackish lake, how about crossing to the Natural Tidal Flats - Ikarize, where a variety of creatures inhabit, and taking a underwater exploration with the instructor? No diving license is required, so you can easily experience it.



Fishing

Embark on a ferry to reach the Natural Tidal Flats - Ikarize, located just in front of Bentenjima, and take on the challenge of fishing using lures! In the vicinity of the Natural Tidal Flats - Ikarize the water becomes shallow, and in the past, it was a paradise for black sea bream fishing due to the abundance of clams, shrimp, and crabs. Unfortunately, due to the impact of global warming, there has been a decline in clam harvesting, particularly for clams, leading to the temporary suspension of clam digging activities. Due to such factors, there has been an increase in black sea bream, leading to a decline in catches of 'clams, shrimp, and crabs.' As a result, there has been a rise in damage caused by 'oysters and seaweed' as substitutes.

As a preventive measure, farmers install nets to prevent black sea bream from entering. As a measure against food damage, let's catch and enjoy the delicious black sea bream from Lake Hamana.

- Fishing is prohibited in Kaihin Kouen during the sea bathing period (fishing is allowed in Ikarise)

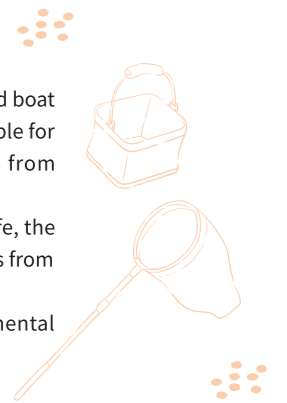


Observation session of marine life at Natural Tidal Flats - Ikarize.

The marine life observation sessions, led by members of the experienced boat association with a wealth of knowledge in fisheries are not only enjoyable for children but also offer valuable content that attracts participation from university research institutions.

As we disembark on Ikari-se by ferry and begin exploring for marine life, the cheers echoes not only from the children but also resonates with cheers from the adults.

We may also cover changes in organisms and plants due to environmental changes in Lake Hamana, as well as attack the microplastic pollution.



! Tours and adventure experiences are typically held from April to November. For inquiries about tours, please contact Tokai Travel Co., Ltd., and for adventure experience consultations, please contact Maisaka-cho Tourist Association.